

ROUTE 52

GARBAGE, FOOD WASTE & RECYCLING SCHEDULE

UPDATED!

2009-10

zero|waste

Beyond Recycling

SOLID WASTE SERVICES

April 2009

S	M	T	W	T	F	S
			①	2	3	4
5	6	7	⑧	9	10	11
12	13	14	15	①⑥	17	18
19	20	21	22	②③	24	25
26	27	28	29	③⑩		

May

S	M	T	W	T	F	S
					1	2
3	4	5	6	⑦	8	9
10	11	12	13	①④	15	16
17	18	19	20	21	②②	23
24	25	26	27	28	②⑨	30
31						

June

S	M	T	W	T	F	S
		1	2	3	4	⑤
7	8	9	10	11	①②	13
14	15	16	17	18	①⑨	20
21	22	23	24	25	②⑥	27
28	29	30				

July

S	M	T	W	T	F	S
			①	2	3	4
5	⑥	7	8	9	10	11
12	①③	14	15	16	17	18
19	②⑩	21	22	23	24	25
26	②⑦	28	29	30	31	

August

S	M	T	W	T	F	S
						1
2	③	④	5	6	7	8
9	10	①①	12	13	14	15
16	17	①⑧	19	20	21	22
23	24	②⑤	26	27	28	29
30	31					

September

S	M	T	W	T	F	S
		①	2	3	4	5
6	⑦	8	⑨	10	11	12
13	14	15	①⑥	17	18	19
20	21	22	②③	24	25	26
27	28	29	③⑩			

October

S	M	T	W	T	F	S
				1	2	3
4	5	6	⑦	8	9	10
11	①②	13	14	①⑤	16	17
18	19	20	21	②②	23	24
25	26	27	28	②⑨	30	31

November

S	M	T	W	T	F	S
				⑤	6	7
8	9	10	①①	12	①③	14
15	16	17	18	19	②⑩	21
22	23	24	25	26	②⑦	28
29	30					

December

S	M	T	W	T	F	S
		1	2	3	④	5
6	7	8	9	10	①①	12
13	14	15	16	17	①⑧	19
20	21	22	23	24	②⑤	26
27	②⑧	②⑨	30	31		

January 2010

S	M	T	W	T	F	S
					①	2
3	4	5	⑥	7	8	9
10	11	12	①③	14	15	16
17	18	19	②⑩	21	22	23
24	25	26	②⑦	28	29	30
31						

February 2010

S	M	T	W	T	F	S
		1	2	③	4	5
7	8	9	①⑩	11	12	13
14	15	16	①⑦	18	19	20
21	22	23	②④	25	26	27
28						

March 2010

S	M	T	W	T	F	S
		1	2	③	4	5
7	8	9	①⑩	11	12	13
14	15	16	①⑦	18	19	20
21	22	23	②④	25	26	27
28	29	30	③①			

PUT GARBAGE AND RECYCLABLES OUT BEFORE 8AM ON COLLECTION DAY

- ◇ FOOD WASTE & GARBAGE
- FOOD WASTE & RECYCLING

□ STATUTORY HOLIDAY



QUESTIONS ON SCHEDULING OR MISSED PICK-UPS CALL 1 866 999 8227

GARBAGE (where service provided by the RDN)

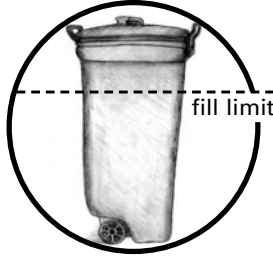
75 litres



100 litres



124 Litres



One can per week

100 litres (22 gallons) garbage per can – larger cans can be used but not filled to the top (see diagram fill limits).

23 kg (50 pounds) per can – for the safety of your driver. If you have trouble picking it up, so will your driver, and remember he has to pick up hundreds of cans per day.

No construction or renovation waste

No yard waste

No items larger than 2 feet in any dimension

Extra containers must have a \$2 tag attached

A maximum of two extra bags with tags

MISSED PICKUPS Waste Services Inc. 1-866-999-8227

INSIDE YOUR BLUE BOX

HOUSEHOLD PLASTIC CONTAINERS

Includes milk jugs, margarine and yogurt containers, and dish soap and laundry detergent bottles. Excluded are containers made of foam plastic such as styrofoam, containers that held chlorine or ammonia-based products, motor oil containers, metal bottle lids or caps, spray nozzle heads and metal attachments.

Rinse to remove food or other residue. Leave labels on.

To ensure that your plastics are picked up, it is essential that plastic containers be flattened or stacked (yogurt and margarine containers) to reduce the amount of space required in the truck.

GLASS CONTAINERS

Food and beverage containers. Leave labels on. Rinse. Discard caps.

No other types of glass, such as kitchen ware, ceramics, drinking glasses, window glass, light bulbs, mirrors or any broken glass.

METALS

Food and beverage containers. Cans – Rinse and remove labels and flatten if possible.

Foil and trays – Rinse, flatten and fold together.

No metal pots, foil contaminated with food, plastic or paper, paper laminated with foil, take out food lids, butter or cigarette wrappings, foil, yogurt lids or other metal products.



INSIDE YOUR YELLOW BAG

HOUSEHOLD PAPER – including junk mail, envelopes, brochures, paper bags, fibre egg cartons, and household boxboard packaging such as cereal, detergent, and shoe boxes, paper towel cores and toilet paper, white and coloured office paper, computer paper and telephone books.

Remove liners. Flatten packaging and place inside bag.

No drinking boxes, tissues, paper towels, waxed paper or papers with plastic or foil lamination.

INSIDE YOUR BLUE BAG

NEWSPAPERS, inserts, sales flyers, magazines and catalogues.

Remove magazine covers and any perfumed inserts and discard.

No books or soiled newspapers.

TEXTILES CLOTHING AND LINENS

Place clean textiles in a separate plastic shopping bag tied with a piece of fabric or string.

Place on top of or beside blue box.

No shoes, hand bags or non-fabric items.

CARDBOARD

Packing boxes, liquor boxes, etc.

Flatten bundle and tie not larger than 30" x 30" x 8". Place beside blue box.

No waxed or coated boxes, soiled pizza boxes, or non-corrugated boxes.

